

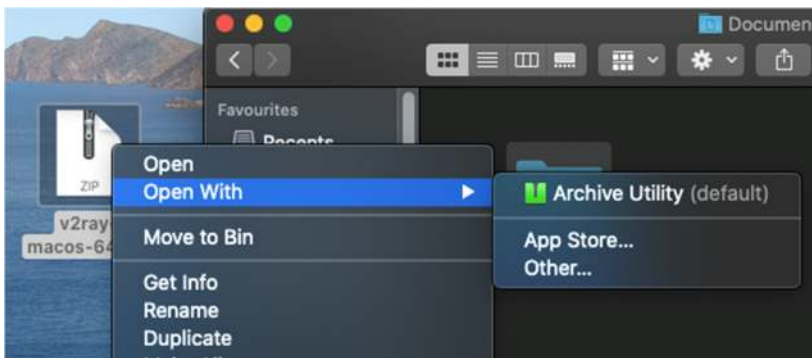
Configure V2Ray Servers - MacOS

1. Download the two V2ray programs for your MacOS computer from here:

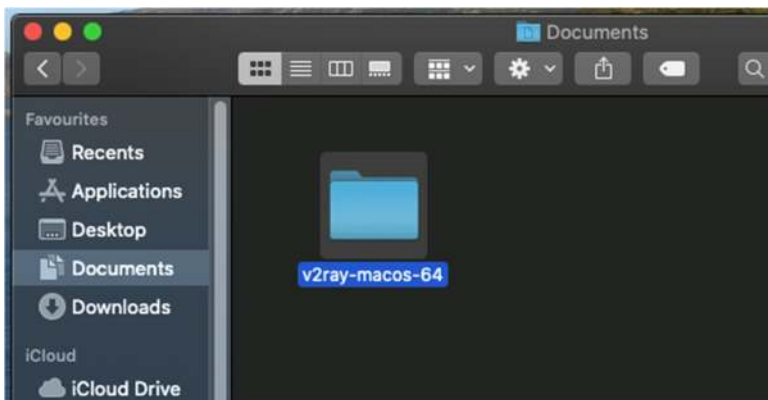
<https://ssr-qr.gtt.tools/downloads/v2ray-macos-64.zip>

<https://ssr-qr.gtt.tools/downloads/Qv2ray.v2.7.0-pre2.macOS-x64.dmg>

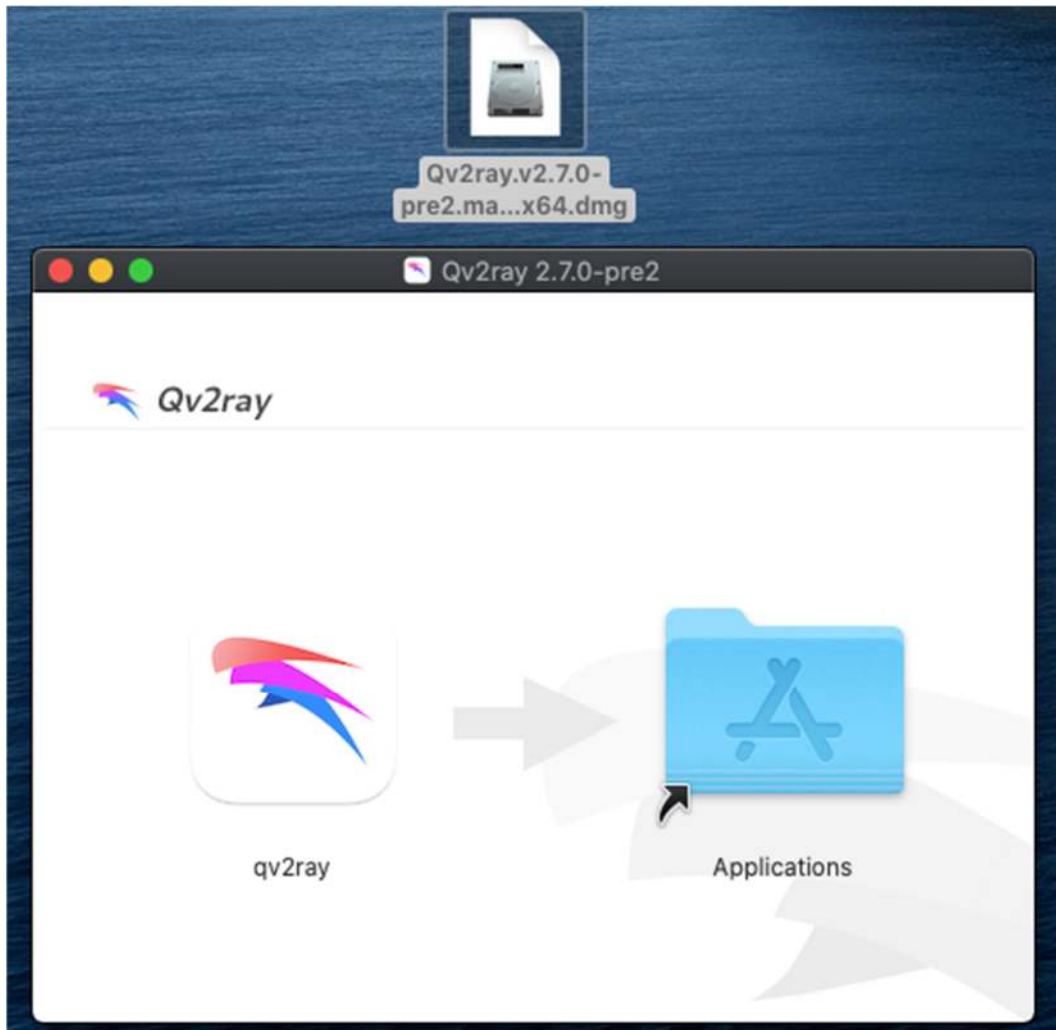
2. Right click on the v2ray-macos-64.zip file and select **Open With...Archive Utility** to extract the folder from the zipfile:



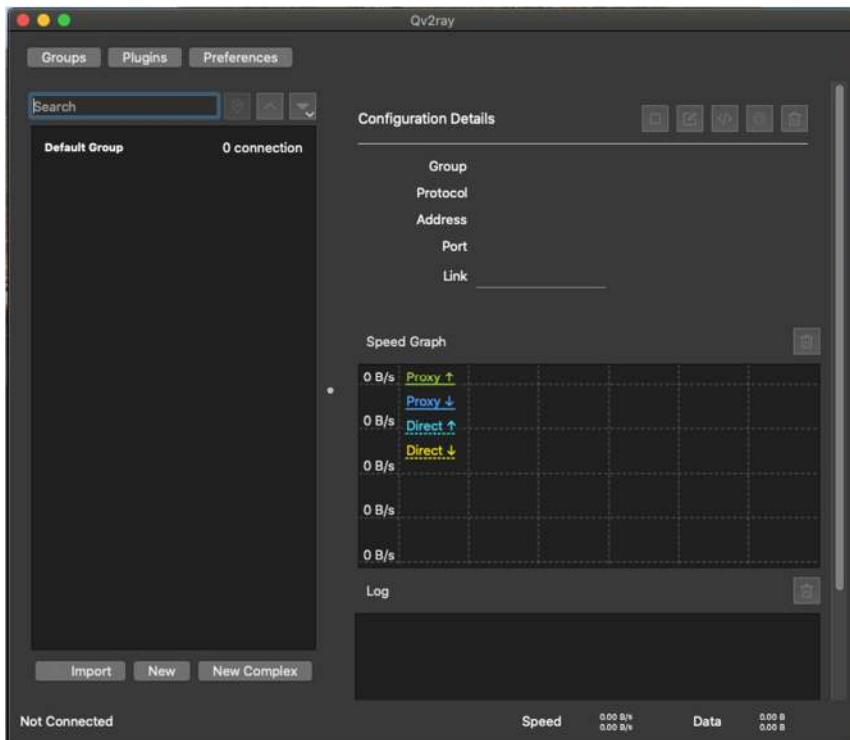
3. Move that folder into your Documents folder:



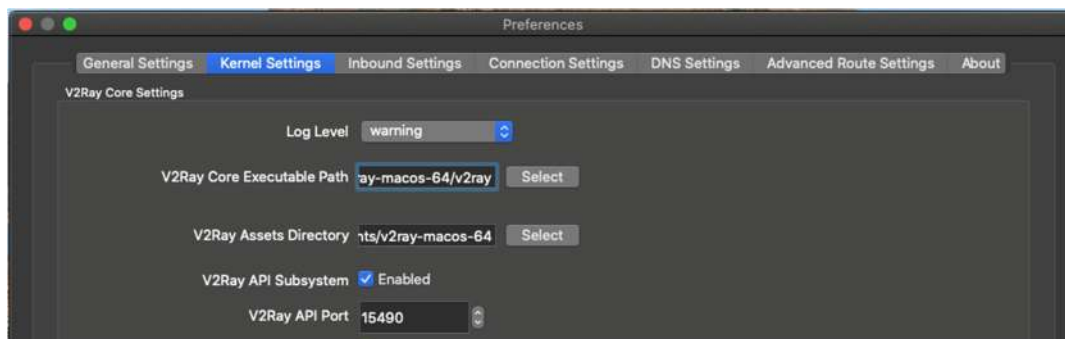
4. Double click the **Qv2ray.v2.7.0-pre2.macOS-x64.dmg** file to install it on your machine. Drag the Qv2Ray icon over and drop it into your **Application's** folder:



5. Open your Applications and start the qv2ray program. Once you do that, a window will appear that looks like this:



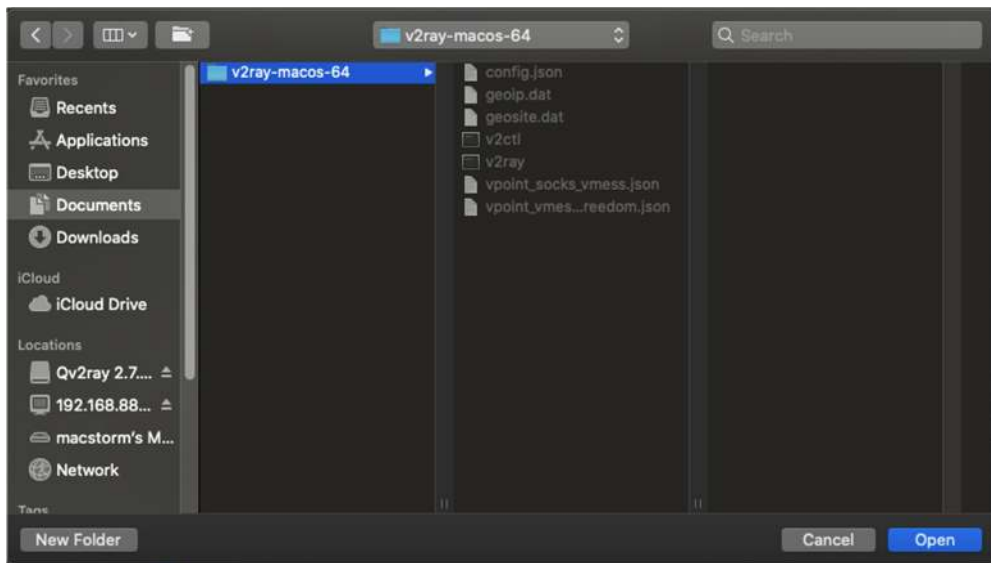
6. Click on the “**Preferences**” button near the top left and in the next window, click on the “**Kernel Settings**” menu item to open up a window that looks like this:



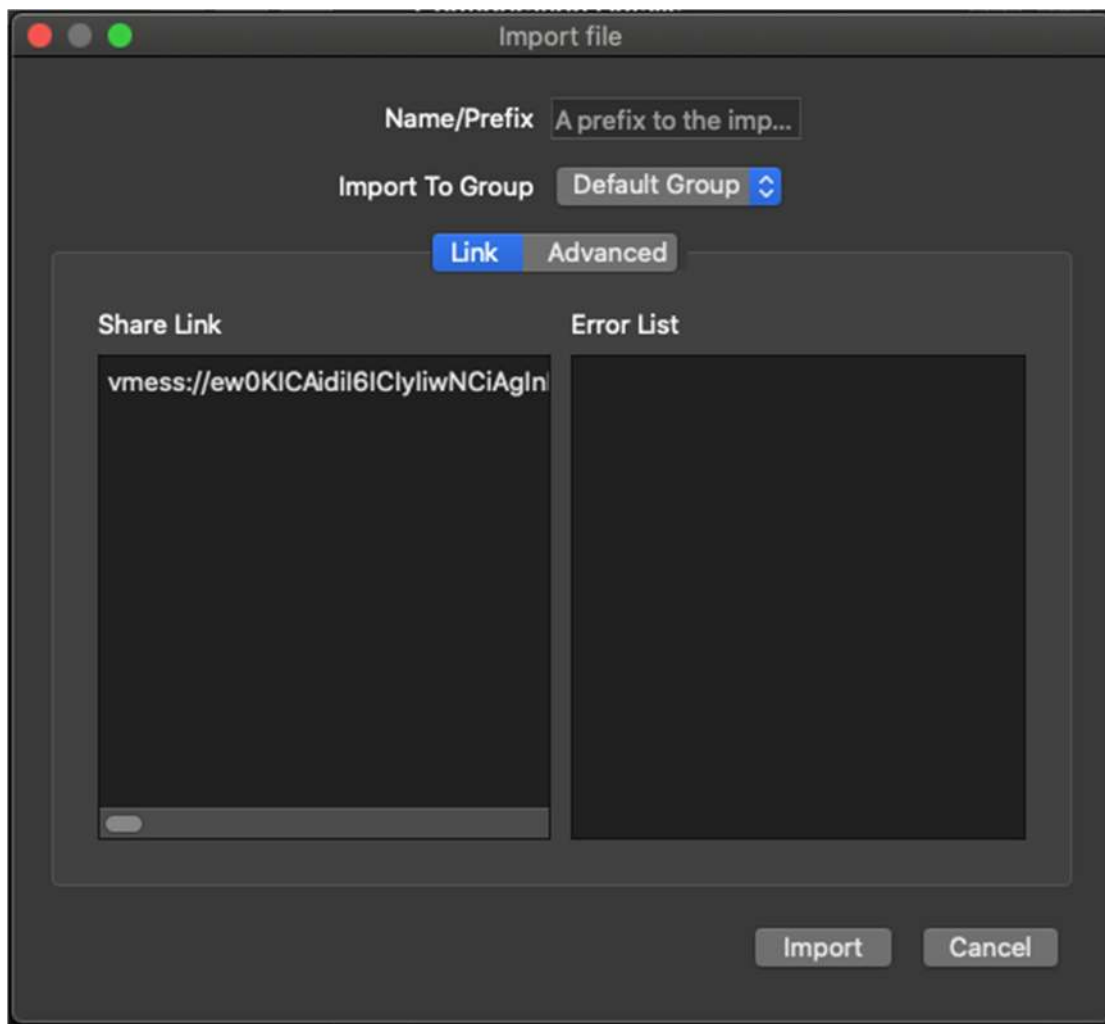
7. We now need to point the program to where the **v2ray-core** program resides that we moved to the **Documents** directory. Click on the “**Select**” button for the “**V2Ray Core Executable Path**”. Navigate to your “**Documents \ v2ray-macos-64 \ v2ray**” program location and click “**Open**” in the lower right.



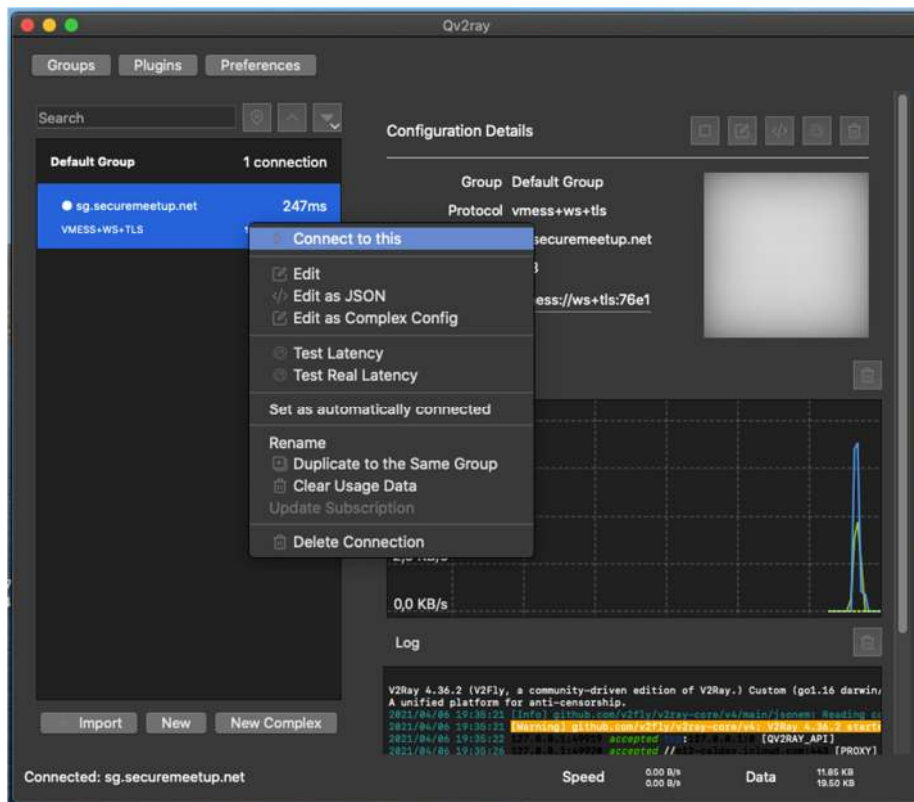
8. In the same manner, we need to also specify the location of the next “V2Ray Assets Directory”. Click on the “Select” button for that and navigate to the “Documents \ v2ray-macos-64” directory and click on the “Open” button.



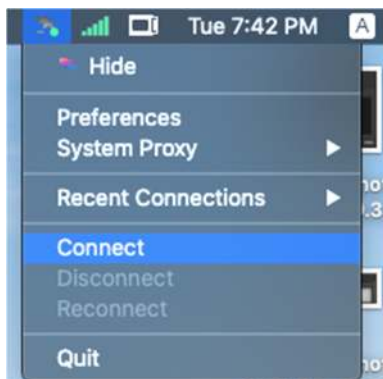
9. Back on the **Preferences** window, click on the “**OK**” button in the lower right to close the window.
10. We now need to add in the V2Ray server settings. Click in the “Import” button in the lower left which will show the following window. Open up the email from helpdesk@gtt.tools that contains your **vmess://** codes. Copy one code at a time to your clipboard. Paste the code into the **Share Link** panel and click on “**Import**”



11. The new server will then show up in the main Qv2ray window: You can start the server one of two ways. The first way is to right click on the connection and from the menu, click on **“Connect to this”** which will start the server running.



12. The second way to connect is in the top system panel, an icon for Qv2ray will show up. Click on the icon and select **“Connect”**



13. You can **“Disconnect”** from the server by using the same menu.

By default, your connection is already running through the proxy as this program changes your system proxy. To verify, open up your web browser and go to <https://globaltech.team/vpncheck.php>

If you are going through the proxy, it will show a green checkmark like this:



GlobalTech.Team

Your External IP Address= 149.28.157.164

✓ You have connected to the 'Singapore V2Ray' VPN network successfully

If you need any help or have questions please contact to:

E-mail: helpdesk@gtt.tools

Skype: [helpdesk@gtt.tools](https://www.skype.com/people/helpdesk@gtt.tools)